

Texas Southern University



Entering Student Survey 2006-2008, 2011

Prepared By:

Institutional
Effectiveness

TEXAS SOUTHERN UNIVERSITY
Entering Student Survey Graphics Report

*Prepared by IE (The Office of Institutional Effectiveness)
06/14/12*

This report provides graphical information for demographic items for Texas Southern University.

For more information about the Entering Student Survey and other Institutional data, contact the Office of Institutional Effectiveness staff listed below.

Sallie Bridges, B.A.
Sr. Systems Analyst
bridges_sa@tsu.edu

Ryan McDonald, B.B.A.
Support Staff
tsudata@tsu.edu

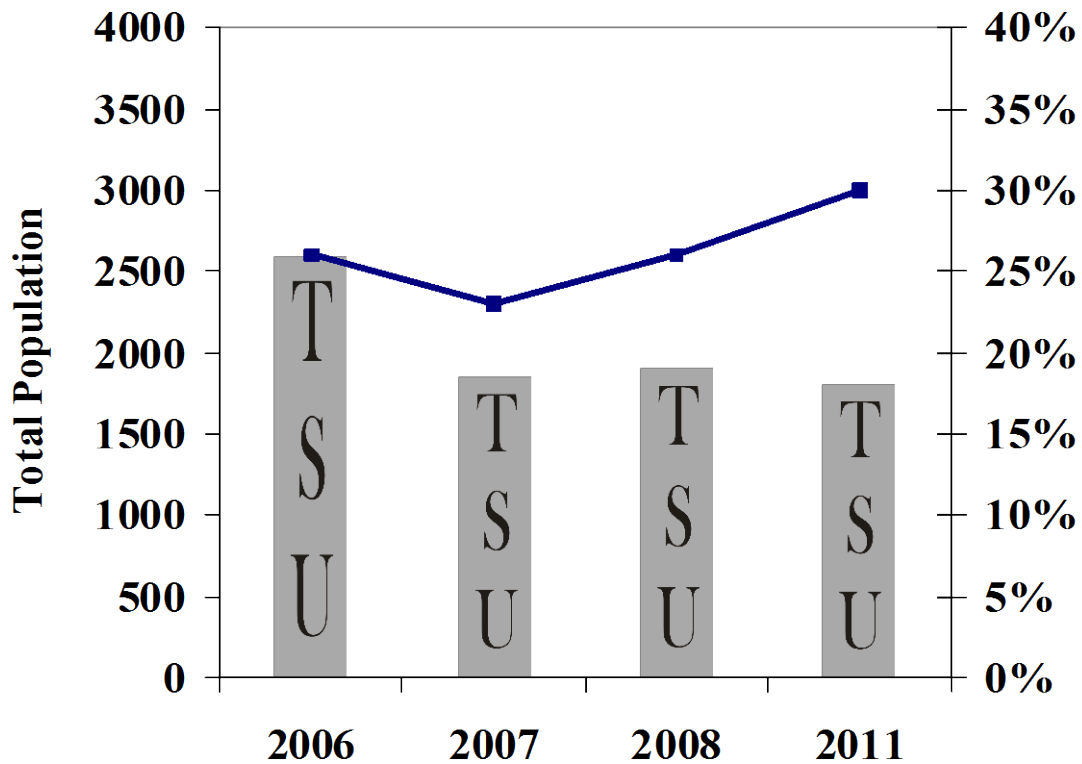
Deonte' Richard, M.S. MIS
Data Manager
richarddm@tsu.edu

Raijanel S. Crockem, Ed.D.
Director
crockem_rs@tsu.edu

Table of Contents

<i>Table 1: Demographics</i>	<i>1</i>
<i>Figures 1 & 2: High School Academic Program</i>	<i>2</i>
<i>Figures 3 & 4: High School Class Rank</i>	<i>2</i>
<i>Figures 5 & 6: High School GPA</i>	<i>3</i>
<i>Figures 7 & 8: High School Class Size</i>	<i>3</i>
<i>Table 6: Source of Funding College</i>	<i>4</i>
<i>Table 7: Reasons For Continuing Education</i>	<i>4</i>
<i>Figure 9 & 10: Preferred Class Times</i>	<i>5</i>
<i>Table 9: Preferred Class Format</i>	<i>5</i>
<i>Figure 11: Areas of Special Needs</i>	<i>6</i>
<i>Table 11: Factors Affecting Choosing TSU</i>	<i>7</i>
<i>Table 12: Perceptions of TSU</i>	<i>8</i>
<i>Figures 12 & 13: Timing of Decision to Attend TSU</i>	<i>8</i>
<i>Figure 14: TSU as a Preferred Choice</i>	<i>9</i>
<i>Figure 15: Purpose of Enrolling at TSU</i>	<i>10</i>
<i>Table 13: Source of Information about TSU¹</i>	<i>11</i>

***Total Entering Student Population:
1st time- Freshmen & New Transfer Students***



2011

N of Total Population	1802
N of Survey Respondents	532

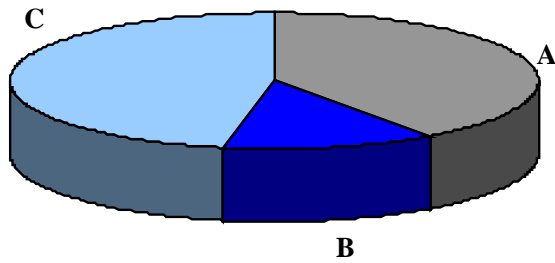
Table 1: Demographic Variables

	<i>Percent Sampled 2006</i>	<i>Percent Sampled 2007</i>	<i>Percent Sampled 2008</i>	<i>Percent Sampled 2011</i>	<i>Percent Enrolled at TSU 2011</i>	<i>National</i>
<i>Age</i>						
19 and Under	87%	78%	85%	72%	56%	77%
20 and Over	13%	22%	15%	28%	44%	23%
<i>Gender</i>						
Male	46%	42%	42%	40%	44%	45%
Female	54%	58%	58%	60%	56%	55%
<i>Ethnicity</i>						
African American	93%	94%	89%	85%	84%	18%
Caucasian	>1%	1%	1%	1%	2%	60%
Hispanic	4%	2%	4%	8%	6%	6%
Other	3%	3%	6%	6%	8%	12%
<i>Classification</i>						
First-time Freshmen	91%	87%	89%	90%	66%	84%
Transfer	9%	13%	11%	10%	34%	16%

Table 2: Type of High School Program

		2006	2007	2008	2011	National
A	College Preparatory	40%	41%	39%	39%	47%
B	Business/Vocational or Occupational	13%	6%	10%	12%	11%
C	General or Other	47%	53%	51%	49%	40%

Fall 2006 Sample



Fall 2011 Sample

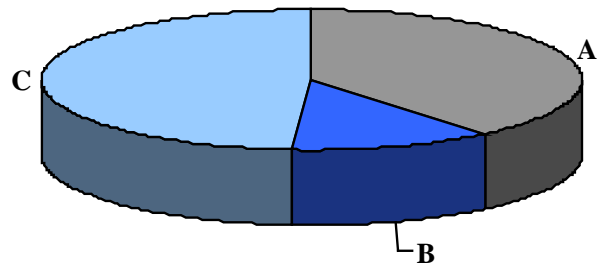
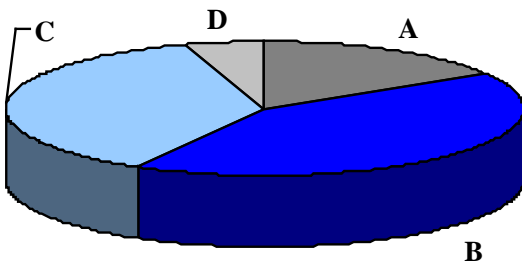


Figure 1 & 2 - High School Characteristics, Academic Program

Table 3: Student's High School Class Rank

		2006	2007	2008	2011	National
A	Top Quarter	16%	15%	17%	32%	28%
B	Second Quarter	42%	42%	43%	42%	36%
C	Third Quarter	37%	36%	34%	23%	23%
D	Bottom Quarter	5%	7%	6%	3%	5%

Fall 2006 Sample



Fall 2011 Sample

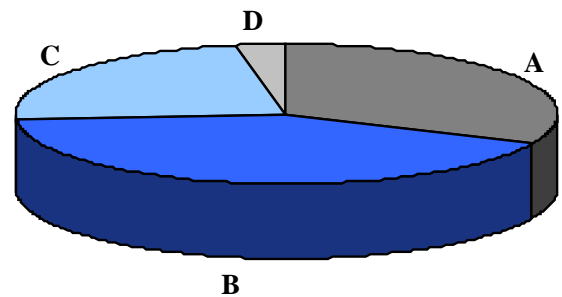
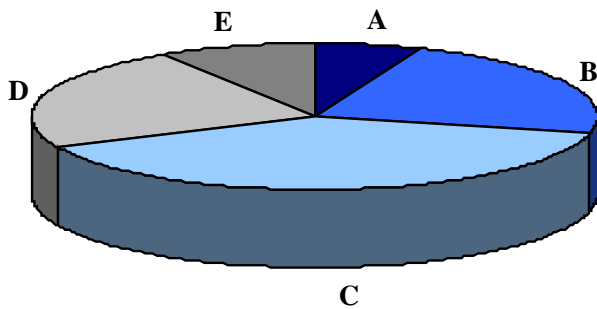


Figure 3 & 4 - High School Characteristics, Self Reported-Class Rank

Table 4: High School GPA

		2006	2007	2008	2011	National
A	A- to A (3.50-4.00)	6%	6%	6%	15%	21%
B	B to A- (3.00-3.49)	23%	23%	28%	35%	30%
C	B- to B (2.50-2.99)	39%	39%	33%	32%	23%
D	C to B- (2.00-2.49)	23%	28%	27%	15%	17%
E	Less than C (Less than 2.00)	9%	4%	6%	3%	6%

Fall 2006 Sample



Fall 2011 Sample

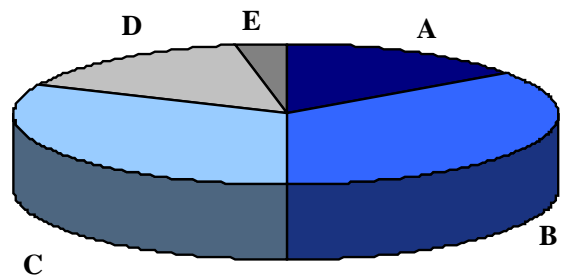
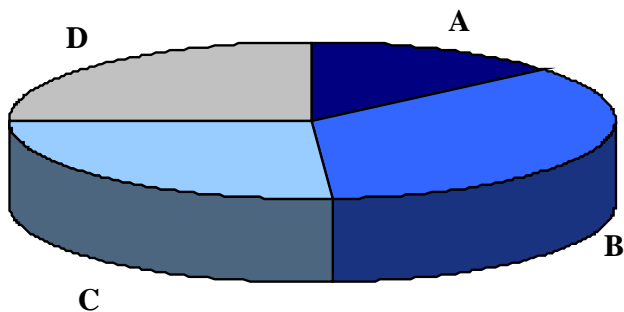


Figure 5 & 6 - High School Characteristics, GPA

Table 5: Size of Graduating Class

		2006	2007	2008	2011	National
A	Less than 200	14%	22%	27%	20%	40%
B	200-399	35%	33%	35%	28%	27%
C	400-599	26%	24%	20%	25%	13%
D	600 or more	25%	21%	18%	27%	9%

Fall 2006 Sample



Fall 2011 Sample

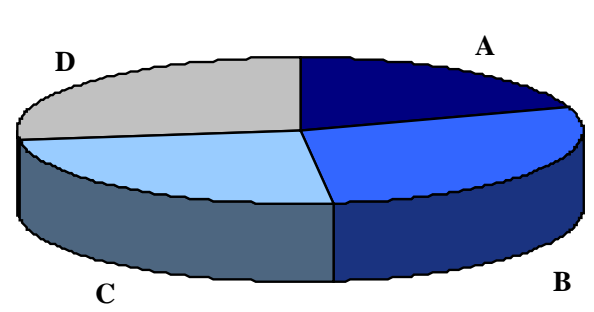


Figure 7 & 8 - High School Characteristics, Graduating Class Size

Table 6: Sources Used for Funding College¹

	2006	2007	2008	2011	<i>National</i>
<u>Educational Grants</u>	82%	79%	80%	82%	50%
<u>Parents/Relatives</u>	77%	80%	80%	73%	73%
<u>Student Loans</u>	75%	77%	76%	72%	56%
<u>Scholarships</u>	62%	57%	62%	65%	60%
<u>Personal Savings</u>	55%	57%	59%	47%	57%
<u>Employment While Attending College</u>	51%	51%	56%	47%	60%
<u>Summer Employment</u>	53%	53%	49%	43%	59%
<u>Other Loans</u>	43%	37%	43%	25%	29%
<u>Social Security Benefits</u>	20%	22%	21%	18%	14%
<u>Spouse's Income</u>	9%	12%	13%	10%	7%
<u>Veterans Benefits</u>	9%	9%	12%	10%	5%

¹Original responses “Major Source” and “Minor Source” are combined to calculate percentages.

Table 7: Reasons for Continuing Education¹

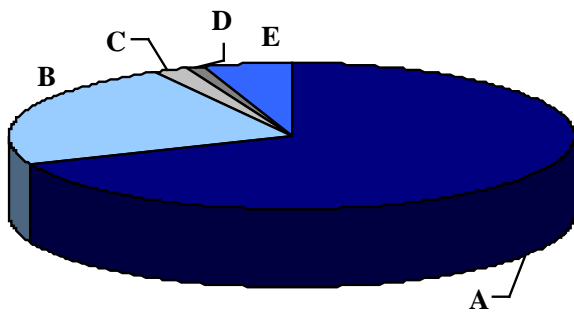
<i>Top Ten Reasons for Continuing Education</i>	2006	2007	2008	2011	<i>National</i>
<u>To Become A Better-Educated Person</u>	98%	99%	99%	97%	97%
<u>To Develop My Mind And Intellectual Abilities</u>	96%	98%	97%	96%	96%
<u>To Qualify For A High-Level Occupation</u>	97%	97%	96%	96%	96%
<u>To Increase My Earning Power</u>	97%	97%	96%	95%	95%
<u>To Meet Educational Requirements For Occupation</u>	95%	95%	95%	95%	95%
<u>To Study New And Different Subjects</u>	86%	88%	90%	90%	90%
<u>To Develop Personal Maturity</u>	84%	87%	89%	84%	84%
<u>To Develop Independence For Parents</u>	81%	77%	83%	80%	80%
<u>To Meet New And Interesting People</u>	74%	75%	75%	76%	76%
<u>Parents/ Relatives Wanted Me To Continue My Education</u>	77%	62%	78%	73%	73%

¹Original responses “Major Source” and “Minor Source” were combined to calculate percentages.

Table 8: Preferred Class Times

		2006	2007	2008	2011	<i>National</i>
A	<u>Morning</u>	69%	72%	68%	75%	50%
B	<u>Afternoon</u>	23%	20%	25%	18%	32%
C	<u>Evening</u>	2%	2%	2%	2%	4%
D	<u>Weekend</u>	1%	1%	<1%	<1%	<1%
E	<u>No Preference</u>	5%	5%	5%	5%	11%

Fall 2006 Sample



Fall 2011 Sample

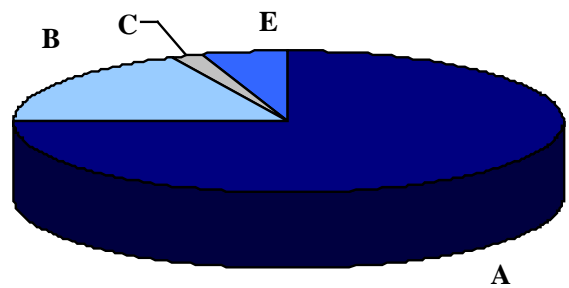


Figure 9 & 10 - Student Preferences, Class Times Offered

Table 9: Preferred Course Delivery Format

	2006	2007	2008	2011	<i>National</i>
<u>Small-group</u>	34%	33%	39%	34%	36%
<u>Lecture</u>	19%	23%	19%	31%	17%
<u>No preference</u>	18%	17%	15%	15%	22%
<u>Lab. or Shop</u>	15%	10%	15%	9%	16%
<u>Private tutor format</u>	7%	7%	5%	3%	2%
<u>Independent study</u>	5%	6%	5%	6%	5%
<u>Other</u>	1%	2%	1%	1%	1%
<u>Correspondence course</u>	1%	2%	1%	1%	1%

Table 10: Reported Areas of Special Needs While Continuing Education

		2006	2007	2008	2011	<i>National</i>
A	<u>Improving Math Skills</u>	80%	79%	78%	70%	54%
B	<u>Develop Better Study Skills and Habits</u>	82%	79%	78%	69%	53%
C	<u>Improving Test-taking Skills</u>	78%	75%	78%	66%	51%
D	<u>Improving Public Speaking Skills</u>	58%	59%	60%	62%	46%
E	<u>Expressing Ideas in Writing</u>	48%	47%	45%	45%	32%
F	<u>Improving Reading Comprehension</u>	45%	46%	43%	44%	32%
G	<u>Identifying a Major Area of Study</u>	45%	40%	51%	39%	29%
H	<u>Selecting an Appropriate Career</u>	39%	37%	41%	38%	33%
I	<u>Increasing Reading Speed</u>	36%	37%	34%	35%	28%

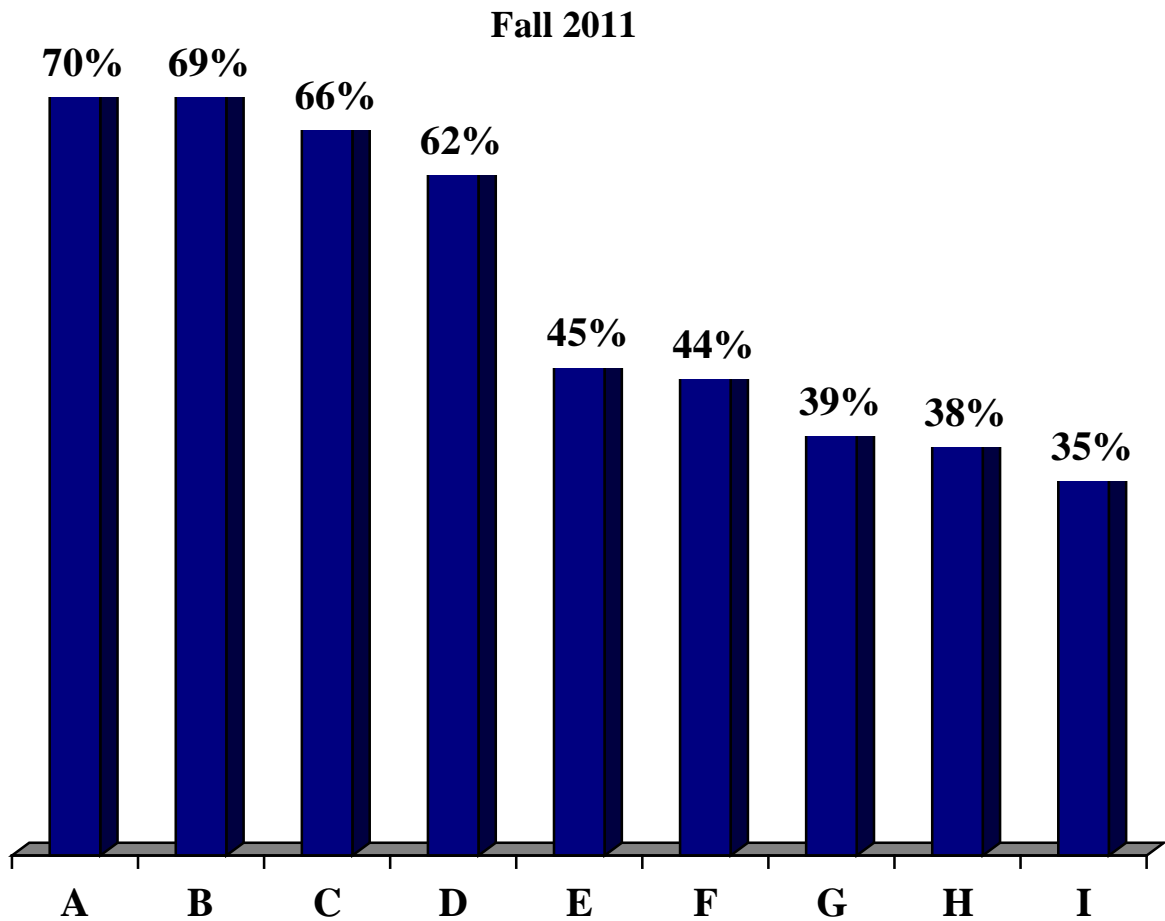


Figure 11 – Reported Areas of Special Needs

Table 11: Factors Affecting Choice to Attend TSU

Rated Very Important in Affecting Choice	2006	2007	2008	2011	National
<u>Availability of Financial aid or Scholarship</u>	78%	78%	74%	75%	47%
<u>Cost of attending the College</u>	69%	64%	67%	67%	47%
<u>Availability of a Particular Program of Study</u>	49%	50%	48%	61%	50%
<u>Academic reputation of the college</u>	50%	49%	54%	51%	33%
<u>Location of College</u>	52%	52%	51%	49%	45%
<u>Sports Opportunities</u>	41%	41%	48%	48%	15%
<u>Variety of Courses Offered</u>	45%	48%	44%	48%	32%
<u>Type of Housing Availability</u>	43%	42%	45%	44%	14%
<u>Extracurricular Activities Available</u>	36%	35%	39%	42%	17%
<u>Entrance Requirements of College</u>	52%	51%	47%	41%	22%
<u>Facilities Available: Labs Classrooms</u>	41%	41%	41%	41%	19%
<u>Opportunity for Part-time Work</u>	42%	34%	37%	37%	20%
<u>Size of the College</u>	33%	29%	33%	34%	25%
<u>Type of Community in which the College is Located</u>	34%	33%	29%	33%	23%
<u>Advice of Parents or Relatives</u>	35%	33%	32%	32%	16%
<u>Ethnic makeup of College</u>	30%	32%	26%	32%	6%
<u>Contact with College Representatives</u>	35%	28%	32%	31%	12%
<u>Advice of someone who has attended the College</u>	33%	32%	32%	30%	16%
<u>Social Climate & Activities at College</u>	24%	27%	24%	29%	12%
<u>Gender ratio of Student Body</u>	26%	19%	28%	25%	7%
<u>Advice of High School Counselors or Teachers</u>	29%	29%	28%	24%	11%
<u>Friends Attend the College</u>	21%	18%	19%	19%	8%
<u>Religious Affiliation of the College</u>	18%	14%	19%	19%	7%

More Than 50% Agreement- Fall 2011 Rating

Table 12: Agreement with Statements about TSU¹

Strongly Agree/Agree with the item	2006	2007	2008	2011	National
<u>College has many activities and organizations for students</u>	74%	72%	66%	74%	62%
<u>There are large number & variety of course offered at this college</u>	64%	60%	58%	64%	64%
<u>College has high-quality program in the subject area I am pursuing</u>	59%	57%	54%	63%	60%
<u>College has high-quality academic programs</u>	56%	50%	47%	63%	66%
<u>College has a strong Inter-collegiate Athletic Program</u>	42%	30%	40%	61%	33%
<u>Excellent recreational facilities for individual students</u>	59%	58%	52%	60%	44%
<u>This college provides sufficient financial aid for students who need assistance</u>	54%	54%	50%	57%	49%
<u>Students from various ethnic backgrounds get along well</u>	51%	46%	48%	57%	43%
<u>Cost of attending this college is reasonable</u>	47%	45%	46%	57%	64%
<u>The foreign language requirement at this college is too strict</u>	15%	13%	15%	57%	6%
<u>This college offers many cultural events and programs</u>	49%	46%	44%	53%	34%
<u>This college offers many job related courses</u>	46%	51%	46%	52%	43%
<u>Students at this college are friendly</u>	37%	42%	39%	47%	59%
<u>College personnel care about individual students</u>	45%	43%	35%	46%	61%
<u>The college has high quality classroom and lab facilities</u>	37%	32%	34%	44%	41%
<u>There are comfortable residence halls at this college</u>	38%	33%	42%	44%	36%
<u>Students at this college are more interested in having fun than studying</u>	48%	52%	49%	37%	15%
<u>Many students at this college hold extreme political views</u>	33%	33%	37%	36%	14%
<u>Many students at this college use drugs and/ or alcohol</u>	38%	40%	42%	35%	13%
<u>Students must be above average to be admitted into this college</u>	14%	10%	21%	25%	14%
<u>It is difficult to earn good grades at this college</u>	13%	14%	17%	13%	10%
<u>This college has too many required courses</u>	18%	22%	16%	18%	11%
<u>There are too many rules and regulations at this college</u>	11%	12%	15%	18%	10%

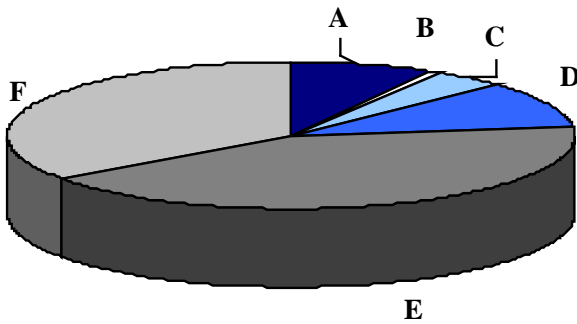
¹Original responses “Strongly Agree” and “Agree” were combined to calculate percentages.

More Than 50% Agreement-Fall 2011 Rating

Table 13: Timing of Decision to Attend TSU

		2006	2007	2008	2011	National
A	Before 9th grade	8%	8%	9%	8%	4%
B	During 9th grade	1%	2%	1%	1%	2%
C	During 10th grade	4%	4%	4%	3%	3%
D	During 11th grade	10%	10%	10%	11%	11%
E	During 12th grade	42%	39%	44%	41%	46%
F	After Completing High School	35%	38%	32%	36%	30%

Fall 2006 Sample



Fall 2011 Sample

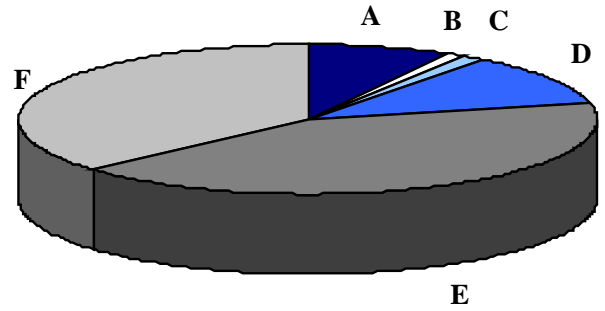


Figure 12& 13 - Decision Made to Attend TSU

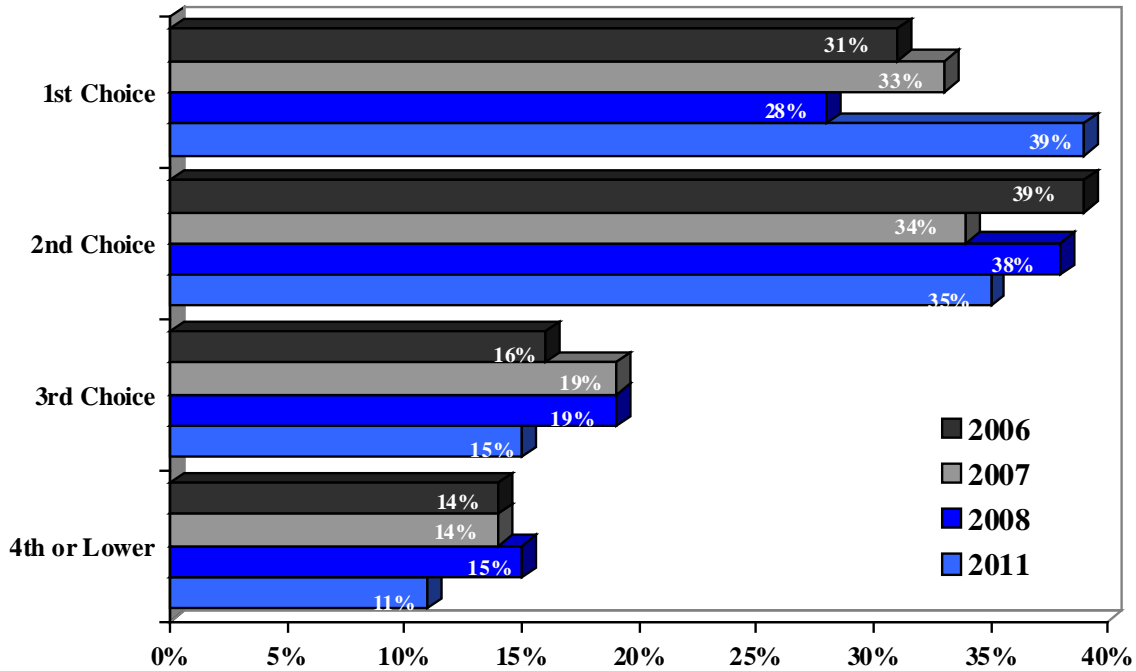


Figure 14: TSU as the Preferred Choice

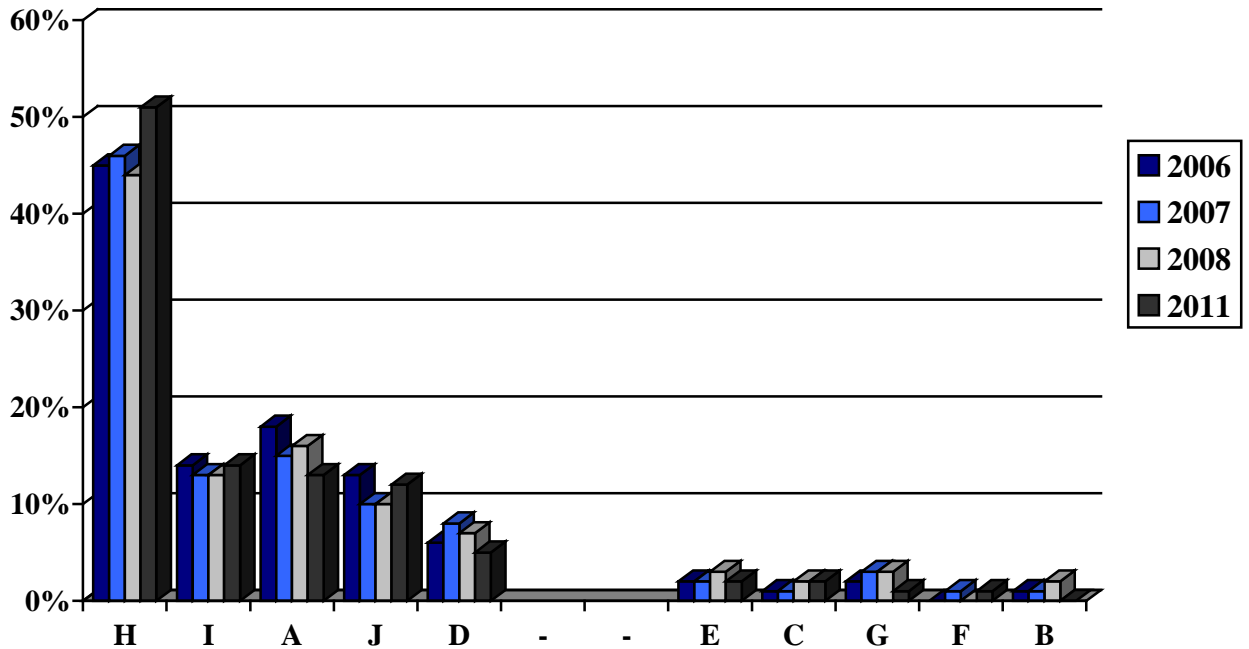


Figure 15-Purpose for Enrolling at TSU

<i>Item</i>	<i>2006</i>	<i>2007</i>	<i>2008</i>	<i>2011</i>	<i>National</i>
<i>Top 5 Reasons</i>					
<i>H</i> To Obtain a Bachelor's Degree	45%	46%	44%	51%	37%
<i>I</i> To Obtain a Master's Degree	14%	13%	13%	14%	7%
<i>A</i> No Definite Purpose in Mind	18%	15%	16%	13%	13%
<i>J</i> To Obtain a Doctorate or Professional Degree	13%	10%	10%	12%	2%
<i>D</i> To Take Needed Courses to Transfer	6%	8%	7%	5%	11%
<i>Bottom 5 Reasons</i>					
<i>E</i> To Obtain Certification	2%	2%	3%	2%	4%
<i>C</i> To Take a Few Courses for Self Improvement	1%	1%	2%	2%	1%
<i>G</i> To Obtain an Associate Degree	2%	3%	3%	1%	18%
<i>F</i> To Complete a Vocational/Technical Program	<1%	1%	<1%	1%	3%
<i>B</i> To Take a Few Job-related Courses	1%	1%	2%	<1%	2%

Table 14: Source of Information about TSU¹

Source of Information About College	2006	2007	2008	2011	<i>National</i>
<u>Parents or Relatives</u>	74%	73%	75%	69%	65%
<u>Visit to Campus</u>	63%	62%	65%	63%	62%
<u>College Brochure or Pamphlet</u>	57%	55%	56%	52%	53%
<u>College Catalog</u>	47%	51%	49%	50%	48%
<u>College Alumni</u>	44%	48%	50%	47%	33%
<u>Friends at the College</u>	51%	53%	52%	46%	46%
<u>High School Classmates</u>	52%	50%	50%	42%	41%
<u>High School Teachers</u>	42%	42%	49%	41%	42%
<u>High school Counselors</u>	46%	44%	45%	39%	42%
<u>College Representative's Visit to High School</u>	49%	40%	47%	37%	32%
<u>High School Administrators</u>	35%	35%	33%	30%	25%
<u>Announcements on Radio or Television</u>	26%	26%	27%	22%	15%
<u>Articles in Newspapers or Magazines</u>	25%	20%	27%	22%	17%
<u>High School Library Materials</u>	21%	17%	25%	19%	12%

¹Original responses “Major Source” and “Minor Source” were combined to calculate percentages.